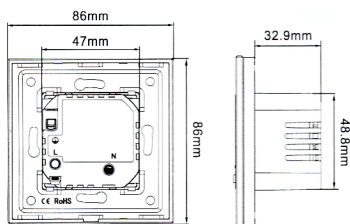


Wi-Fi Fast Charger USB Power Socket

User Manual



Dimension Drawing

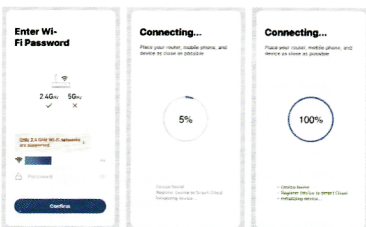


App Installation

- Connect Your Smartphone Or Tablet To The WLAN Router.
- Download The "SMART LIFE" Or "TUYA SMART" App From The App Store/Google Player/Official Website To Your Smartphone Or Tablet. Or Scan The QR Code Via Your Smartphone To Install The App

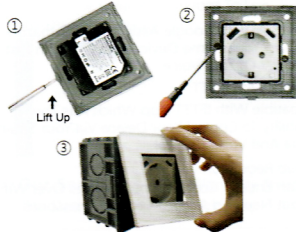


- Start The Setting Up Process By Opening "SMART LIFE" App
- Enter Your Username And Password To Get The Verification Code To Log Into "SMART LIFE" App To Get Connected With Your Devices.



Home Centre Icons:

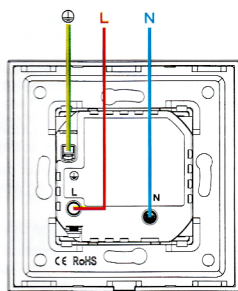
- Icon "⌵" Refers To Device Options
- Icon "+" Refers To Device Adding Process
- Icon "↶" Refers To Device Rename Option



Fixed Installation Methods

- ① Place A Screwdriver Into The Short Slot And Gently Lift Up Until Release
- ② Screw To Fix The Socket To The Wall Mounted Box
- ③ Push The Front Frame Into The Installed Device Carefully

Wiring Diagram



- Take Off The Socket Cover Frame
- Connect The Device In Accordance With The Relevant Diagrams
- Insert The Device With The Mounting Frame Bracket Into The Mounted Box
- Ensure No Bare Wires From The Terminals
- Push The Cover Frame To The Device
- Screw The Device Carefully
- Switch On The Main Supply
- For Indoors, Use In Dry Area Only

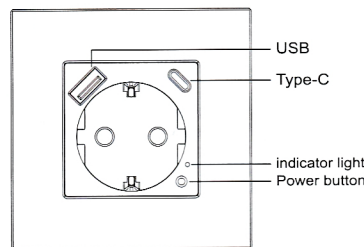
Caution: Electrical Devices Should Be Mounted And Connected By A Qualified Electrician

Warning: Don't Install Device Directly To Freshly Plastered Wall, It May Get Tarnished

Wall Installing Boxes:

- ① Ø = 76mm, Width 71mm, Depth 64mm
- ② Ø = 76mm, Width 71mm, Depth 64mm

Schematic Display Of Product Output

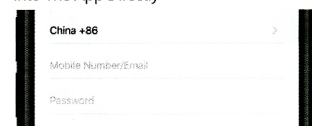


Device Basic Operation

Read The Device's Operating Instructions Before Starting Any Electrical Work To Avoid Any Damage Caused Via Improper Use

- Connect your smartphone to Wi-Fi and turn on the Bluetooth (If the phone Bluetooth is off, the device needs to be added manually).
- Open "Smart Life" App, click the "+" button on the right up corner of the interface to add device;
- Press and hold the button on the socket panel for about 5 seconds, release the button when the light flashes once;
- When the red indicator blinks, add the device;
- Enter Wi-Fi password, App will automatically add device by Wi-Fi and Bluetooth;
- Click "Done" to finish adding the device.

- Set Up Your Desired Password To Log Into The App Directly



Our Service: 2 Years Warranty From The Date The Item Is Purchased

Tip: Only 2.4GHz WIFI Frequency Is Supported

Safety Instructions

- Switch Off Power Supply Before Installing
- Use An Electrical Tester To Ensure Safety
- Check The Terminal Connections Before Wiring

Related Device Features

- **APP Control:** Allows You To Control All Of Your Devices Via Your Smartphone Wherever You Are
- **Timing & Schedule Function:**
 - ① Enables You To Set Up The Accurate Time Of Your Devices Automatically On/Off Whether You're Home Or Not
 - ② Save Energy And Money On Your Bills It's Secure And Save Power!
 - ③ Enables You To Turn The Device On/Off When Sunset Or Sunrise Starts
 - ④ Allows You To Turn The Device On/Off Under Different Climate Conditions

- **Sharing Control:** Enables You To Share Your Devices With Your Family And Friends.
- **Sync Status:** Enables You To Track Status To Change All Of Your Devices Via Your Smartphone

Specifications

Power Supply	90V-250V AC 50/60Hz
Max Current	16A
Output Voltage	12V DC 1.67A 9V DC 2.22A 5V DC 3A
Operating System	IOS / Android
WIFI Frequency	2.4GHz 802.11 b/g/n
WIFI Standard	IEEE 802.11 b/g/n
Working Temperature	-20°C To 70°C
Wireless Consumption	<0.5W

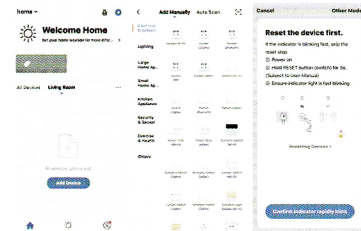
Safety Instructions

- Switch Off Power Supply Before Installing
- Use An Electrical Tester To Ensure Safety
- Check The Terminal Connections Before Wiring

Technical Features

- The WIFI Smart Device Is Designed To Control, Schedule And Monitor Your Home Electrical Appliances Via Your Smartphone Or Manually By Powering On/Off
- The WIFI Smart Device Is Compatible With WIFI Function Which Enables It To Perfectly Perform The Following Features:
 1. APP Control
 2. Timing & Schedule Function
 3. Sharing Control
 4. Sync Status
 5. Voice Control (Compatible With Google Assistant And Amazon Echo)
 6. Integrate With IFTTT
 7. No Hub Required

Tip: The Factory Default Status Initialization Is ON. You Can Change The Initialization Status In "Setting" Button



Input Your Password To Start Adding The Smart Device, Wait For The Process To End, Then Successful Pairing Will Be Confirmed

Limited Warranty

The limited warranty does not cover any failures and operating difficulties due to abuse, misuse, alteration, misapplication, improper installation, and maintenance service by you or any third party.

The limited warranty does not cover damages to the finish, such as scratches, dents, discoloration or rust after purchase.

In case of problems while adding the device, reset the appliance and repeat the adding process.

To provide you with better smart home products and services!

Note: During The Adding Process, The Smartphone Should Be In A Direct Range With The Device

Warning: All Of The Cover Frames And Functions Are Designed To Only Fit And Work With Our Devices