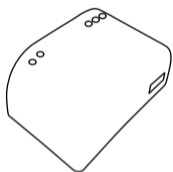


1CH WiFi TH Smart Switch

Model: TYTHWB-B1RF



Parameters:

- Input voltage: DC 7V~32V /USB5V
- Max.Current: 2200W/10A
- Wi-Fi Standard: Wi-Fi 2.4Ghz b/g/n+Bluetooth
- Display resolution: 0.1° & 1%RH
- Radio Frequency: 433Mhz
- Working temperature: -20°C~70°C
- Size: 69*41*20mm

Checklist before using the device

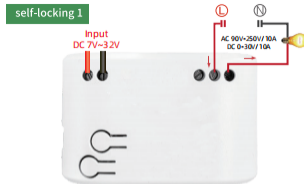
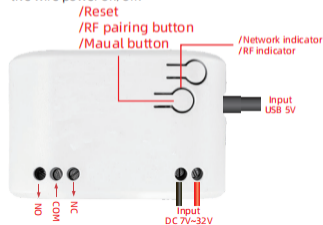
- Your smart phone or tablet has connected to a 2.4g WiFi with internet.
- You need to enable Bluetooth of the phone.
- You have the correct WiFi PWD.
- Your smart phone or tablet must have access to APP store,Google play.
- Your router is MAC-open.

User Guide

- You can download the App by searching "Tuya Smart" in mobile app stores or scanning the following QR code

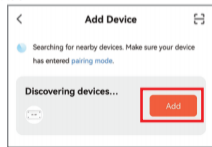


- Register an Tuya Smart account.
- If you have Tuya Smart account, just login.
- Power on.
ON/OFF operating principle:
The connected appliances work/stop through live wire power on/off.



Add devices

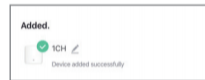
- Reset the device first:
if the network indicator blinking fast (0.5S/time) , skip the reset step.
 - Power on
 - hold down the Reset button for 5 seconds, until network indicator(red light)blinking fast(0.5s/time).
- Clicking + in the top right corner on tuya smart app, wait a few seconds, After the devices are found, Click "Add" .



- Select a 2.4GHz Wi-Fi network and enter your password,then click "Next" .

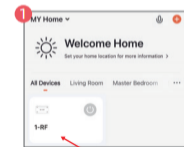


- Name your device.



- When the network is disconnected, the switch will automatically switch to the Bluetooth control of the phone.
- Click the on/off buttons on the APP can control device,Manual control switch also can be display real-time on the APP.

APP Function



Tip here to enter the full function operation interface.



- /Rename
- /Offline Notification
- /Share Device
- /Create Group
- /Remove Device

/Rename

- /Schedule
- /Delay off(Inching)

- /Temperature calibration
- /Humidity calibration
- /Temp Sensitivity
- /Hum sensitivity
- /relay_status

/Temp Statistics
/Hum Statistics

Remote control matches the code

Matching:

- hold RF pairing button for 3 seconds until RF pairing indicator(blue light)is on.
- then press the remote control buttons for 2 seconds.
- loosen the remote control buttons,matching success.



Clear code:

- Long press the RF pairing button for 15 seconds (RF pairing indicator is always on), loosen the RF pairing button until RF pairing indicator is off.

* note: the matching/clear code method is only available with RF function switch/module reference.

TROUBLESHOOTING

Solutions for the failure of product matching and offline:

Enter the homepage of App,click the icon in the lower right corner of the interface to enter.

